

# INSTRUMENT AERODROME ELEV 2423' APPROACH CHART

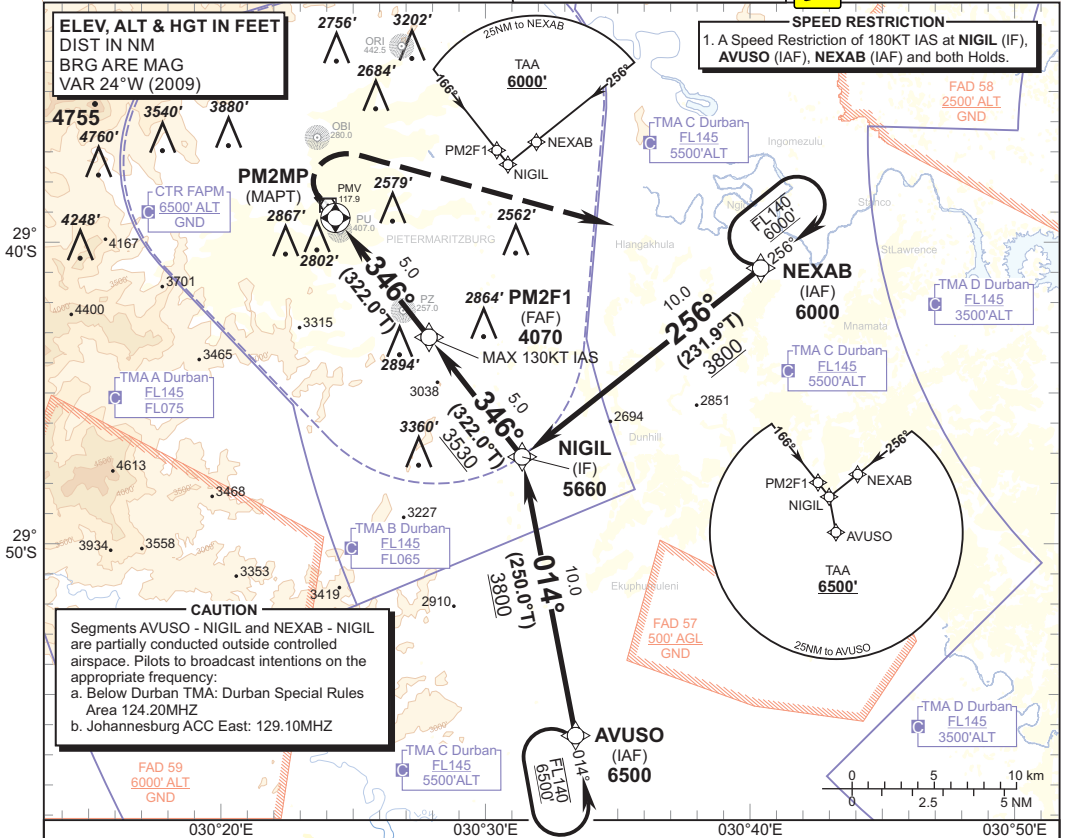
HEIGHTS RELATED TO  
THR RWY 34 - ELEV 2423'

PIETERMARITZBURG TWR 122.00  
DURBAN APP 125.75

**PIETERMARITZBURG  
RNAV (GNSS) RWY 34**  
CAT A - C



**SPEED RESTRICTION**  
1. A Speed Restriction of 180KT IAS at NIGIL (IF), AVUSO (IAF), NEXAB (IAF) and both Holds.

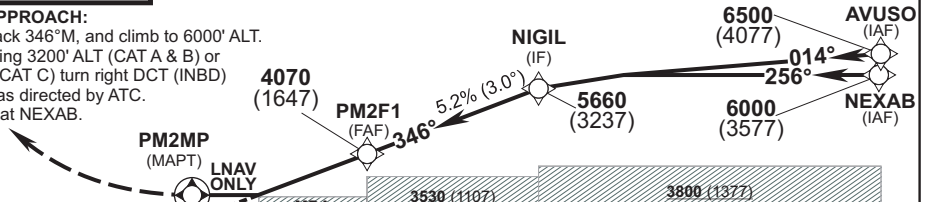


**CAUTION**  
Segments AVUSO - NIGIL and NEXAB - NIGIL are partially conducted outside controlled airspace. Pilots to broadcast intentions on the appropriate frequency:  
a. Below Durban TMA: Durban Special Rules Area 124.20MHZ  
b. Johannesburg ACC East: 129.10MHZ

	030°20'E	030°30'E	030°40'E	030°50'E								
DIST (NM) to THR 34	(MAPT) 0	1	1.8	2	3	4	(FAF) 5	6	7	8	9	(IF) 10
DIST (NM) to Next WP	PM2MP	1	1.8	2	3	4	PM2F1	1.0	2.0	3.0	4.0	NIGIL
ADVISORY ALT	THR 34	2800	MDA	3110	3430	3750	4070	4390	4710	5020	5340	5660

**TRANSITION ALT 8500**  
**TRANSITION LEVEL ATC**

**MISSED APPROACH:**  
Maintain track 346°M, and climb to 6000' ALT.  
When passing 3200' ALT (CAT A & B) or 3400' ALT (CAT C) turn right DCT (INBD) NEXAB or as directed by ATC.  
To be level at NEXAB.



**THR ELEV 2423**  
NM to/from THR RWY 34

	0	1	2	3	4	5	6	7	8	9	10	11	12	13	14	15	16	17	18	19	20	
						MDA	3530 (1107)				3800 (1377)											

		OCA (H)	A	B	C	C/RVR	GS	KT	70	100	120	140	160
Straight-in Approach	LNAV	AREA QNH	2.5% MDA(H) 3500(1077)	3500(1077)	3800(1377)	2000	PM2F1 to THR	M:S	4:17	3:00	2:30	2:09	1:53
		FAPM QNH	2.5% MDA(H) 3030(607)	3030(607)	3300(877)	2000	Rate of descent	FPM	373	533	639	746	852
		RVR	3.3% MDA(H) 3030(607)	3030(607)	3100(677)	2000	GS	KT	100	120	150	180	210
Circling	HGT Related to AD ELEV	3500(1077)	3500(1077)	3800(1377)		2.5% Missed APCH Climb Gradient	FPM	254	304	380	456	532	
						3.3% Missed APCH Climb Gradient	FPM	355	402	502	602	702	

CHANGE: Missed APCH Text